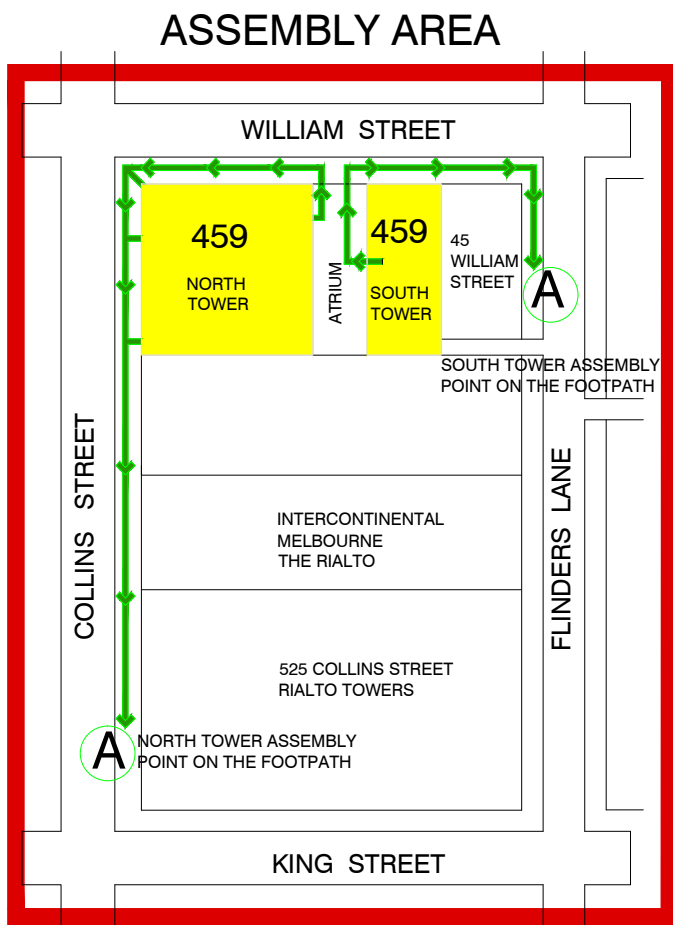


Owned & Managed by Juilliard

ISSUE DATE : 10.10.19

VALID FOR A PERIOD OF 5 YEARS
DIAGRAMS USED ON THE SIGN ARE NOT TO SCALE



RESPOND TO AN EMERGENCY

EMERGENCY ALARM TONES

Alert Alarm - BEEP-BEEP-BEEP
Evacuation Alarm - WHOOP-WHOOP-WHOOP
TO RAISE AN ALARM FOR AN EMERGENCY
TELEPHONE 000
FOR - POLICE - FIRE - AMBULANCE

STAGES OF EVACUATION

EMERGENCY PROCEDURES

EVACUATE ON HEARING THE EVACUATION ALARM - WHOOP-WHOOP-WHOOP

- Follow instructions given by wardens
- Remain calm and exit in an orderly fashion
- Evacuate thru the nearest & safest fire exit
- Proceed to the designated assembly area and remain there until directed to return
- Alert warden if there are any injuries or other critical emergencies.

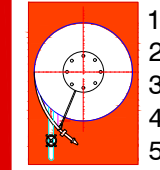
FIRE EXTINGUISHERS



1. Remove from the bracket.
2. Carry to the scene of fire.
3. Pull pin.
4. Squeeze handle.
5. Direct agent at base or fire.

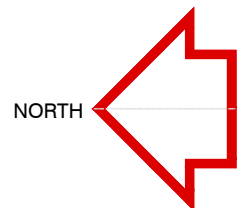
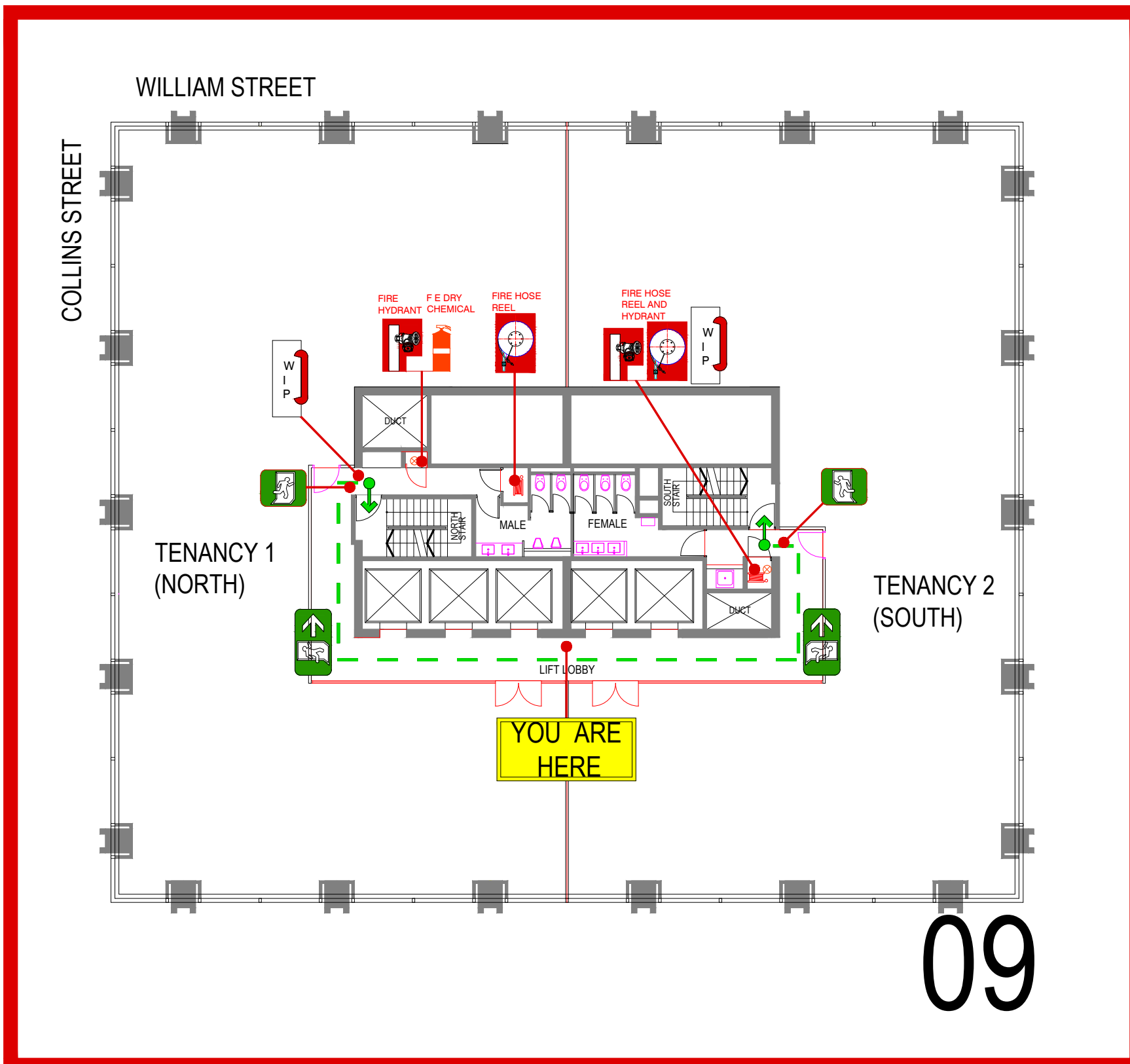
DRY CHEMICAL EXTINGUISHER

HOSE REEL

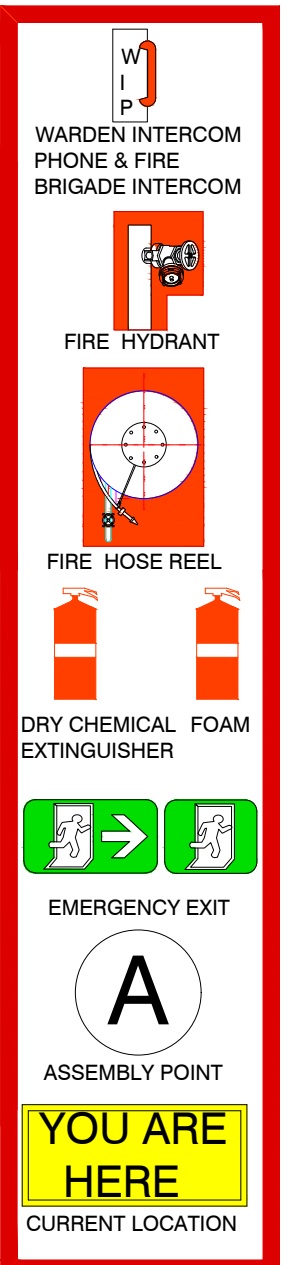


1. Open Valve.
2. Run out hose.
3. Open Nozzle.
4. Direct steam at base of fire.
5. Do not use for electrical.

FIRE HOSE REEL



NORTH



SYMBOLS

459 COLLINS STREET EVACUATION SIGN DIAGRAM
NORTH TOWER NINTH FLOOR WEST SIDE



459 Collins Street – Evacuation Procedures

Please refer to the floor plan on the reverse of this page for exit points assembly area details

On the Alert Tone “Beep-Beep-Beep”

On hearing the Alert Tone, occupants shall take the following actions:

- Check their immediate surrounding areas for fire, smoke or any other abnormal situation and report it to a Floor Warden.
- Do not rush to the exit stairs at the first Beep-Beep-Beep, it may only be a warning to check our surroundings, with no further action required.
- If there is immediate danger, follow Floor Warden’s instructions to commence evacuation.

On the Evacuation Tone “Whoop-Whoop-Whoop”

On hearing the Evacuate Tone, occupants shall take the following actions:

- Follow directions from Floor Wardens at all times.
- Prepare for evacuation. Please do not take your bags, laptops or other large items with you.
- Do not head for the lifts, they will not be operational.
- Alert Floor Wardens of anyone unable to exit via the stairs (disabilities or other conditions).
- Exit the floor by the nearest safe exit.
- Walk in single file down the stairs with one hand on the railing.
- Go directly to the safest Assembly Area (location specified on the following page)
- Report any missing persons to the Floor Warden and standby for further instructions.

Current Wardens are:

- Kirsty Johnston
- Kathryn Considine
- Alex Breckler

They will be wearing yellow/red hats or helmets.